

Antenna 101033



LTE/GPS adhesive antenna



Specifications:

LTE Antenna

| | |
|-----------------|-----------------------|
| Frequency: | 698-960/1710-2690 MHz |
| Polarization: | Linear |
| Gain: | 2.5 dBi |
| V.S.W.R (min.): | <3.0 |
| Impedance: | 50 Ω |

GPS Antenna

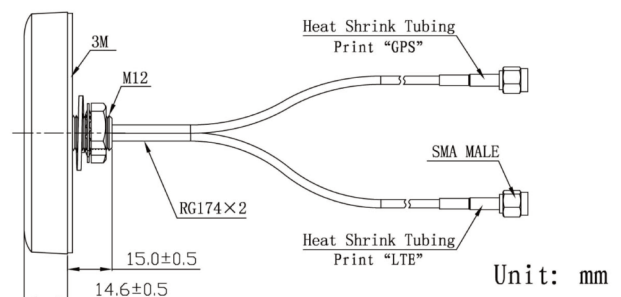
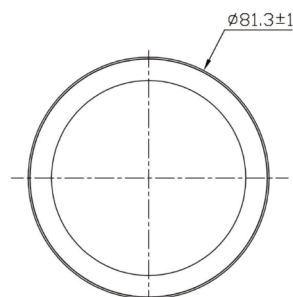
| | |
|-------------------|---------------------|
| Center Frequency: | 1575.42 \pm 1 MHz |
| Polarization: | RHCP |
| Gain: | 2 dBi (Zenith) |
| V.S.W.R: | <1.5 |
| Impedance: | 50 Ω |

LNA

| | |
|----------------------|---------------|
| Gain: | 28 \pm 2 dB |
| Noise Figure: | <1.5 |
| V.S.W.R: | <2.0 |
| Supply Voltage: | 3-5 V DC |
| Current Consumption: | <20 mA |

Mechanical

| | |
|---------------------------|--|
| Cable: | 2x 3 m RG174 |
| Connector: | 2x SMA (male) |
| Material: | ABS |
| Mounting Method: | Screw |
| Operating Temperature: | -40°C to +85°C |
| Relative Humidity: | Up to 95% |
| Protection: | IP67 (exclude cable outlet) |
| Vibration: | 10 to 55 Hz with 1.5 mm amplitude 2hours |
| Environmentally Friendly: | ROHS Compliant |



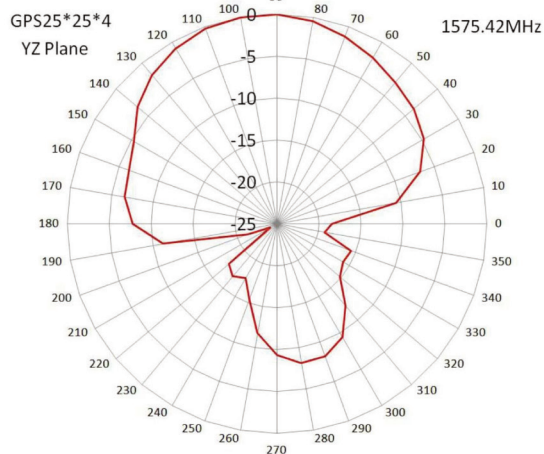
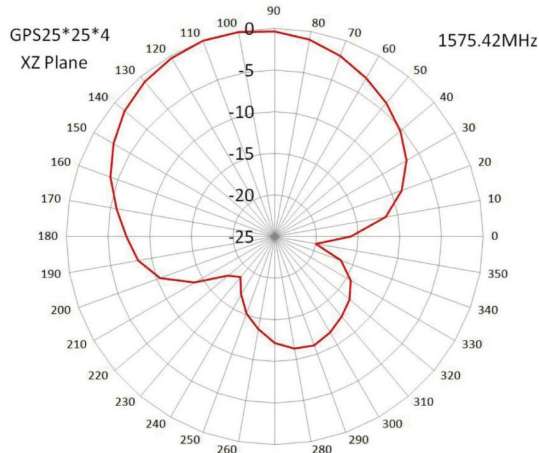
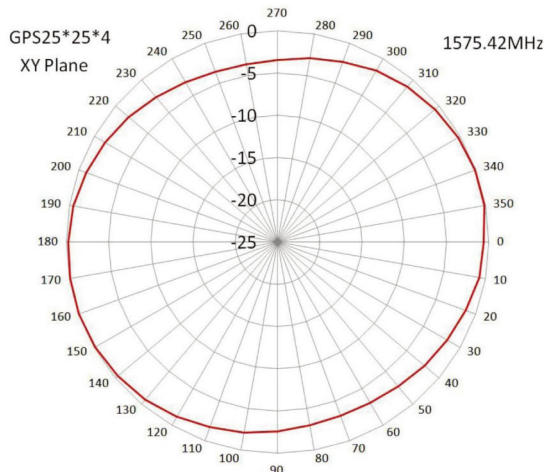
Antenna 101033



LTE/GPS adhesive antenna



GPS Antenna



LTE Antenna

