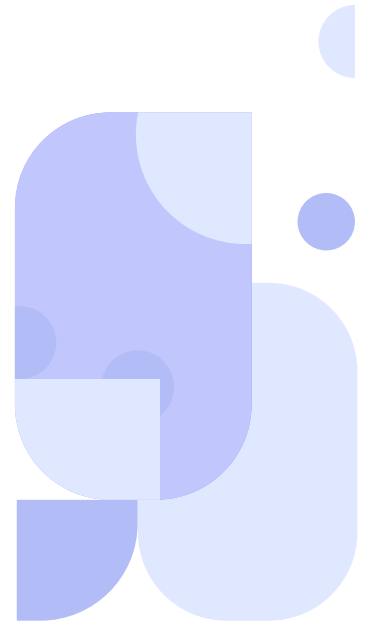


Technical Document



Overview

C120GS is a LTE CAT 6 compatible Smart Module that is powered by GCT's GDM7243Q, running on two ARM Cortex A7 at 832MHz, one for LTE and the other for application, and Linux OS

The module's basic network protocols and interfaces along with its CAT 6 capability and M.2 form factor aids the customer in a plug and play integration of C120GS into their design that spans various applications such as a setup box

LTE CAT 6 based on 3GPP E-UTRAN Release 11
ARM Cortex A7 processor: 832MHz clock (Dual Core)
On-Chip RF Transceiver
Linux OS
M.2 Socket 2 USB 3.0 (Type 3042-S1-B) Form Factor

Available Region



Europe

Basic Module Information

Application Processor Specification

ARM Cortex A7 processor: GDM7243Q 832MHz Dual-Core

Flash: 128MB

RAM: 256MB

Supported Bands

FDD: B3/ B7/ B28B

Communication Protocols

HTTP(S), TCP(S), UDP, MQTT(S), FTP(S)

Temperature Range

Normal working temperature: -30°C to +85°C

Interfaces

1.8V/3V SIM Interface

1xUSB3.0, 3xUART

1xSPI, 1xI2C, 1xUSIM, 13xGPIO, 1xPCM

4xANTCTL, 1xADC



Packaging

M.2(key-B) - Dimension: 42 x 30 x 2.6 mm,

Network Speed (Peak values)

LTE CAT 6: 50Mbps (UL), 300Mbps (DL)

Power Characteristics

Voltage Range: 3.0V to 3.6V

Typical Voltage: 3.3V

TxD ON Max: 751 mA