

# Directional 4x4MiMo 4G/5G Antenna

WMM4G-6-60



- 4x4 MiMo High Gain Directional Antenna for 4G/5G
- Supports New Generation CAT18/20 Devices
- Frequency range 617-960/1710-6000MHz
- Suitable for wall or mast mounting

The WMM4G-6-60 is a high gain directional 4x4 MiMo antenna for 4G and 5G networks. It incorporates four pairs of wideband element assemblies in a single housing and is designed to support fixed site CAT18/20 client devices. It offers 6dBi peak gain for 617- 960MHz and 9dBi peak gain for 1710-6000MHz. The weather resistant housing is designed for wall or mast mounting with the supplied hardware. WMM4G-6-60-5FKJ version is fitted with FAKRA D jacks.

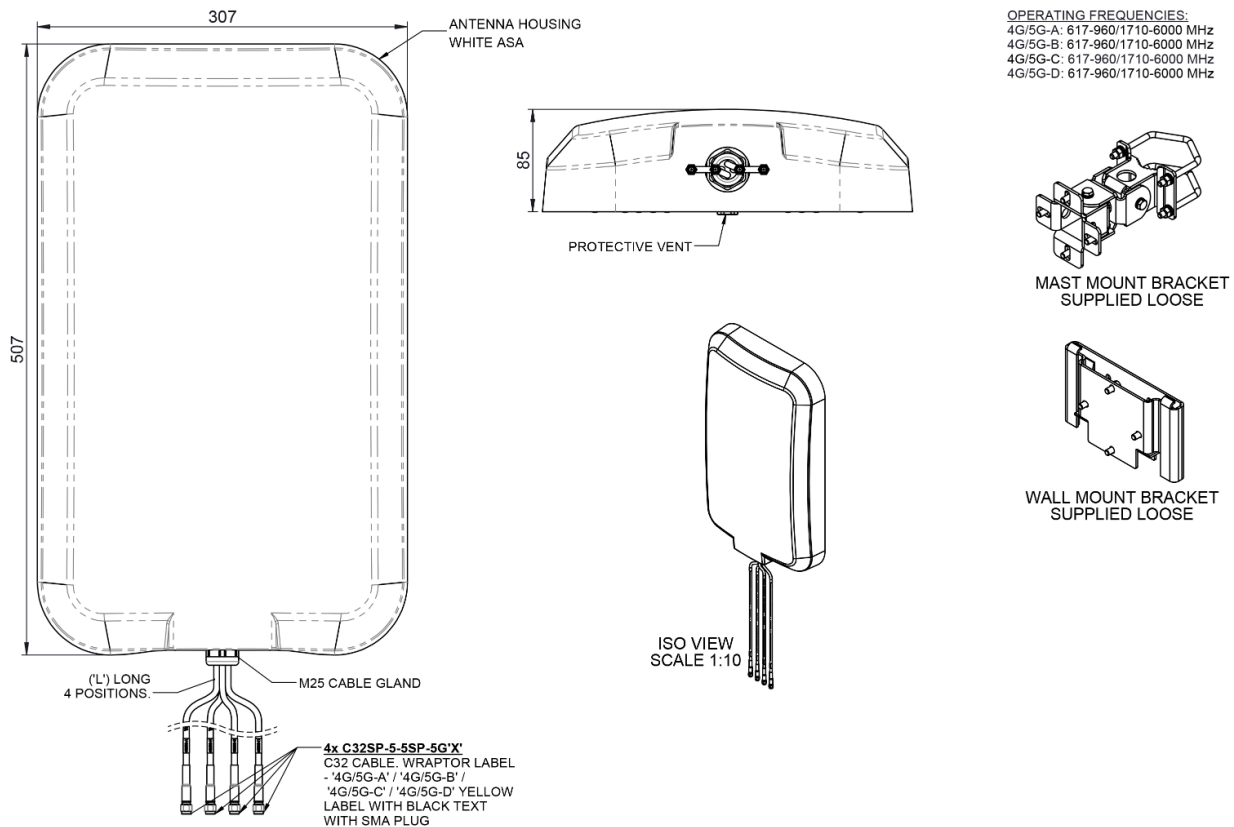
The standard WMM4G-6-60-5SP version has 5m length ultra-low loss CS32 type coaxial cables which eliminates exposed connector joints and simplifies the installation process

The WMM4G-6-60-05NJ version has 50cm length cables, fitted with N type jack, which is ideal for installations that require a longer cable run, where Panorama's CS240 or CS400 type coaxial cable can be used to minimise the cable insertion loss.

The WMM4G-6-60 is a value added product for network operators and service providers by improving the link resilience to the router, achieving increased data rates for the subscriber, resulting in customer satisfaction and retention.

## Technical Drawing

WMM4G-6-60-5SP Shown



# Directional 4x4MiMo 4G/5G Antenna

WMM4G-6-60

Product Data

Part No.	WMM4G-6-60-05NJ	WMM4G-6-60-5SP	WMM4G-6-60-5FKJ	WMM4G-6-60-5NP
<b>Electrical Data</b>				
Frequency range (MHz)	617-960 / 1710-6000			
Operational bands	4G / 5G			
Radiation pattern	Directional			
Nominal polarisation	+/- 45deg / Vertical			
Peak gain	617-960MHz	6dBi		
(excl cable loss)*	1710-6000MHz	9dBi		
Efficiency - excluding cable loss (all bands)	> 60%			
Correlation co-efficient ( all bands)	< 0.2			
Max input power (W)	20 Watts			
<b>Mechanical Data</b>				
Dimensions (mm)	Height	507 (19.96")		
	Width	307 (12.01")		
	Depth	85 (3.34")		
Operating temp (°C)	-40° / +80°C (-40° / 176°F)			
Material	ASA			
Colour	White			
IP Rating	IP66			
Radome material certifications	UL94-HB, UL746C-f2			
Weight (g)	5400			
Survival wind speed (m/s)	55			
Typical wind load @ 45 m/s (N)	200			
<b>Mounting Data</b>				
Fixing	Wall Mount / Flush Wall Mount / Mast Mount			
Mounting bracket material	Coated steel / Aluminium / Stainless Steel			
Pole diameter (mm)	20-50 / (0.78 - 1.96")			
<b>Cable &amp; Connector Data</b>				
Cable Type	Cell Cables: CS32 FRZH Both meet EN6722 / EN45545-2)			
Diameter (mm)	5 (0.2")			
Length (m)	0.5 (19")	5 (16.4')	5 (16.4')	5 (16.4')
Connector	N Socket (f) x 4	SMA(m) x 4	FAKRA D x 4	N-Plug (m) x 4

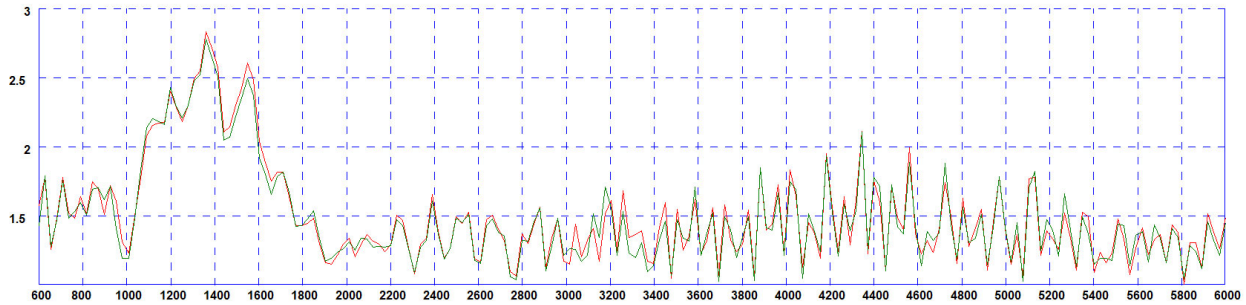
\* Peak gain derived from CST Microwave Studio and excludes cable

# Directional 4x4MiMo 4G/5G Antenna

WMM4G-6-60

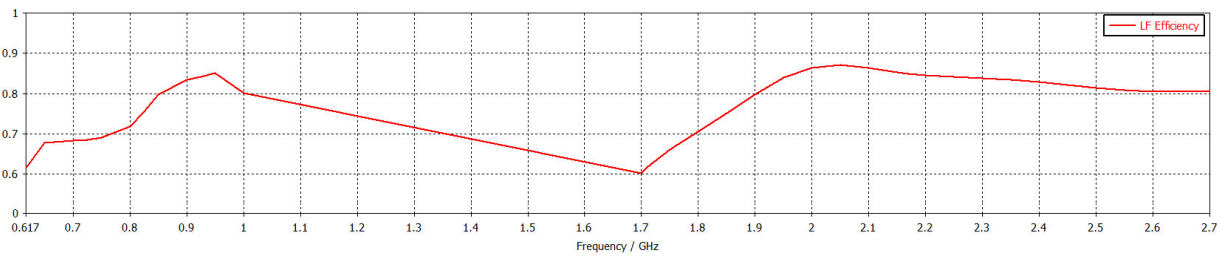
## Electrical Data

Typical VSWR\*



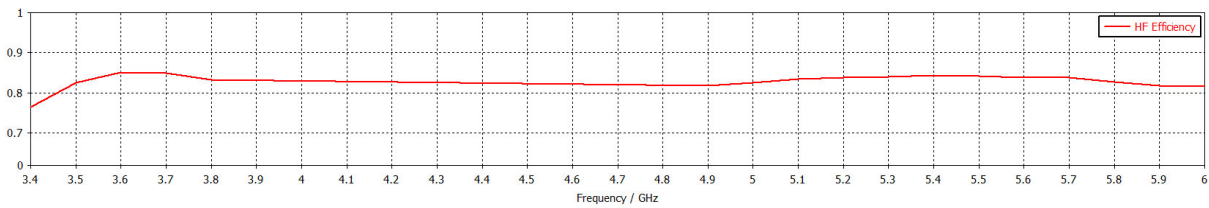
\*VSWR for elements assemblies 1 and 2 measured with 5m (16') of CS32 cable.

Typical Efficiency 617-2700MHz\*



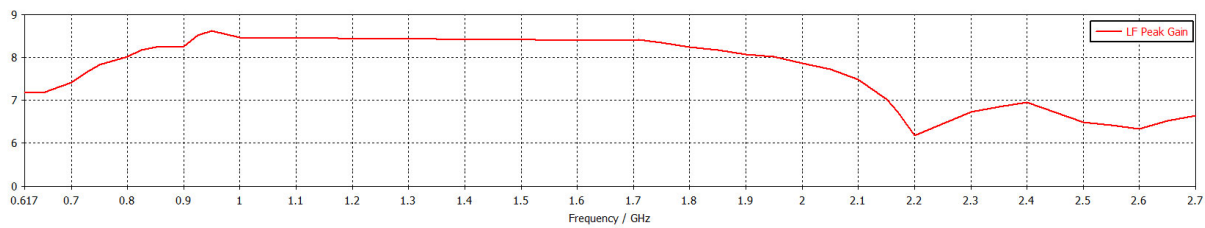
\*Efficiency simulated in CST Microwave Studio excluding cable loss.

Typical Efficiency 3400-6000MHz\*



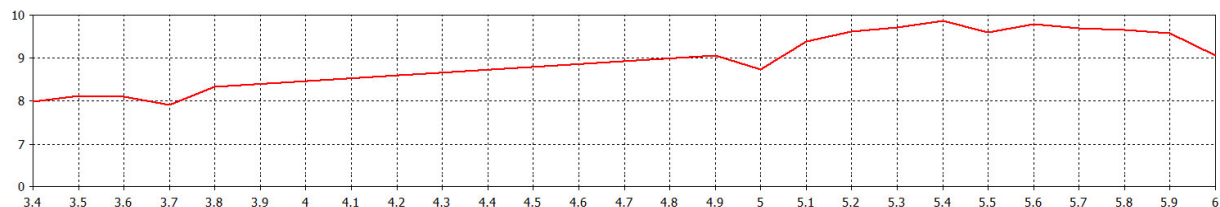
\*Efficiency simulated in CST Microwave Studio excluding cable loss.

Typical Swept Gain 617-2700MHz\*



\*Swept gain simulated in CST Microwave Studio excluding cable loss.

Typical Swept Gain 3400-6000MHz\*



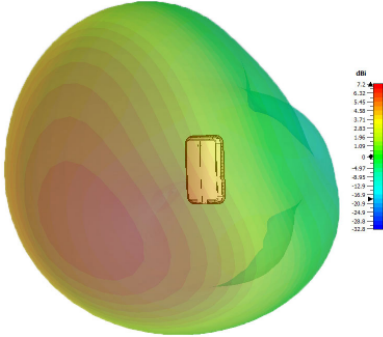
\*Swept gain simulated in CST Microwave Studio excluding cable loss.

# Directional 4x4MiMo 4G/5G Antenna

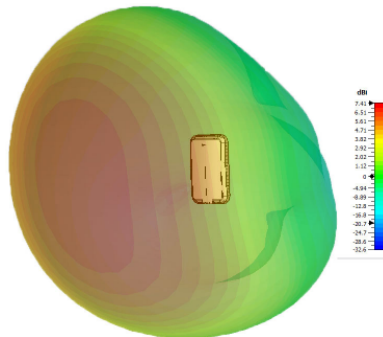
WMM4G-6-60

## 3D Patterns

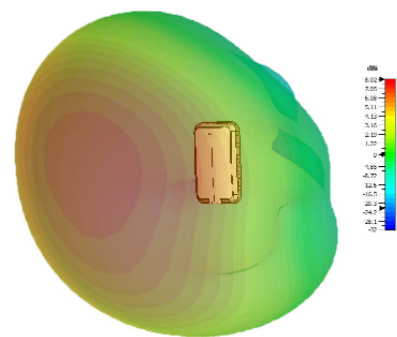
Typical 3D Pattern 617MHz\*



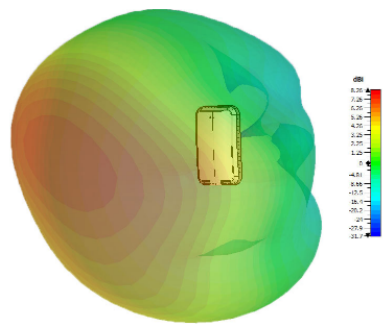
Typical 3D Pattern 700MHz\*



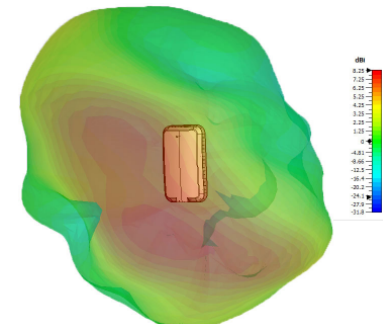
Typical 3D Pattern 800MHz\*



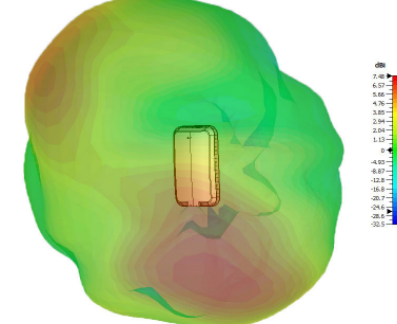
Typical 3D Pattern 900MHz\*



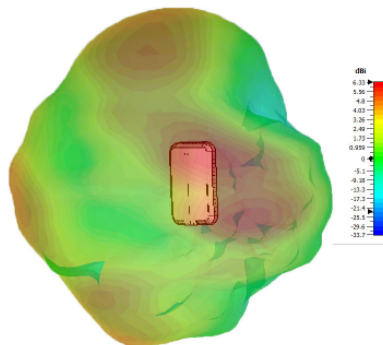
Typical 3D Pattern 1800MHz\*



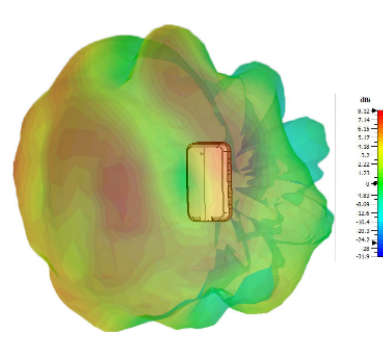
Typical 3D Pattern 2100MHz\*



Typical 3D Pattern 2600MHz\*



Typical 3D Pattern 3600MHz\*



Typical 3D Pattern 5600MHz\*

