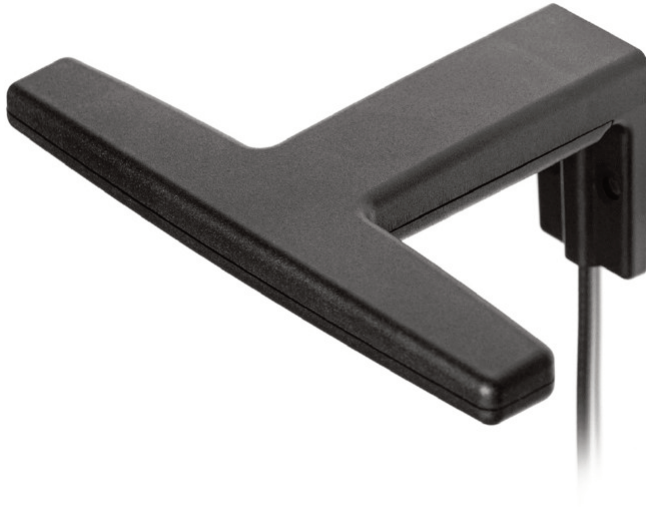


# Antenna 194860 – 194864

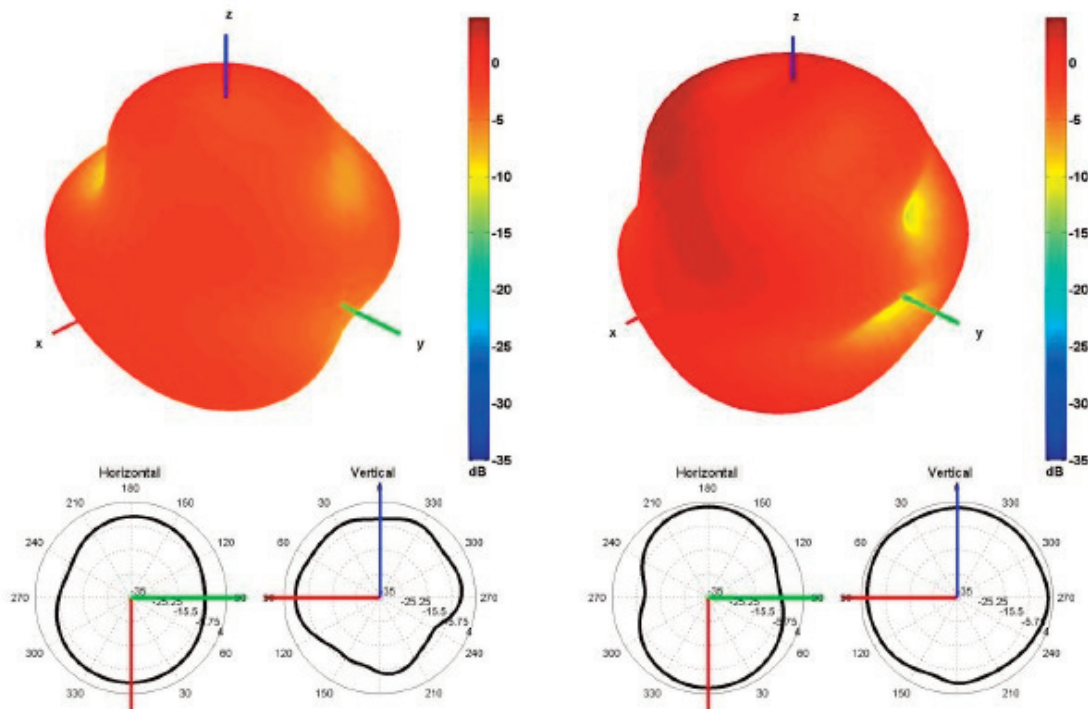


## LTE wall mount antenna



### Technical data:

Standards	2G,3G and 4G
Frequency	698-960, 1710-2170, 2500-2700
VSWR	~2.7:1, ~2.1:1, ~2.7:1
Efficiency (%)	~61.5, ~64.9, ~51.8
Peak Gain (dBi)	~1.6, ~3.1, ~2.6
Impedance	50 Ω
Polarisation	Linear
Max. Input Power	25 W
Mounting	Wall Mount
Fixing	2× M4 (Not included)
Dimensions	123 × 81 × 45 mm
Connector	SMA (male)
Cable:	3m LL100 = 194860 5m LL100 = 194861 10m LL100 = 194862 15m LL100 = 194863 20m LL100 = 194864
Operating temperature	-40 °C to +85 °C
Certificates	IP67, IP69

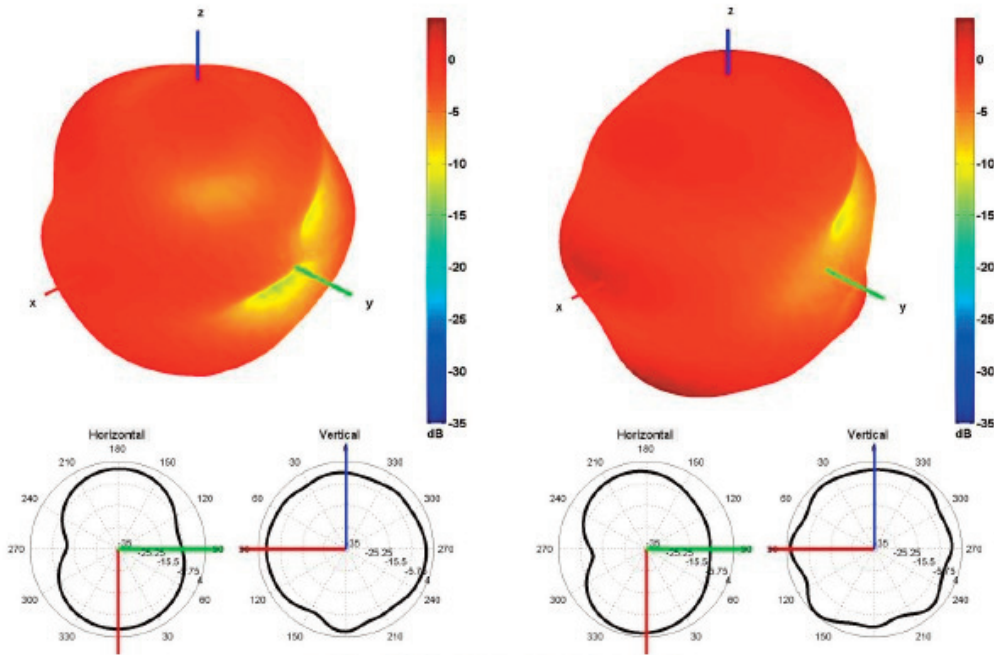


750 and 850 MHz Radiation pattern

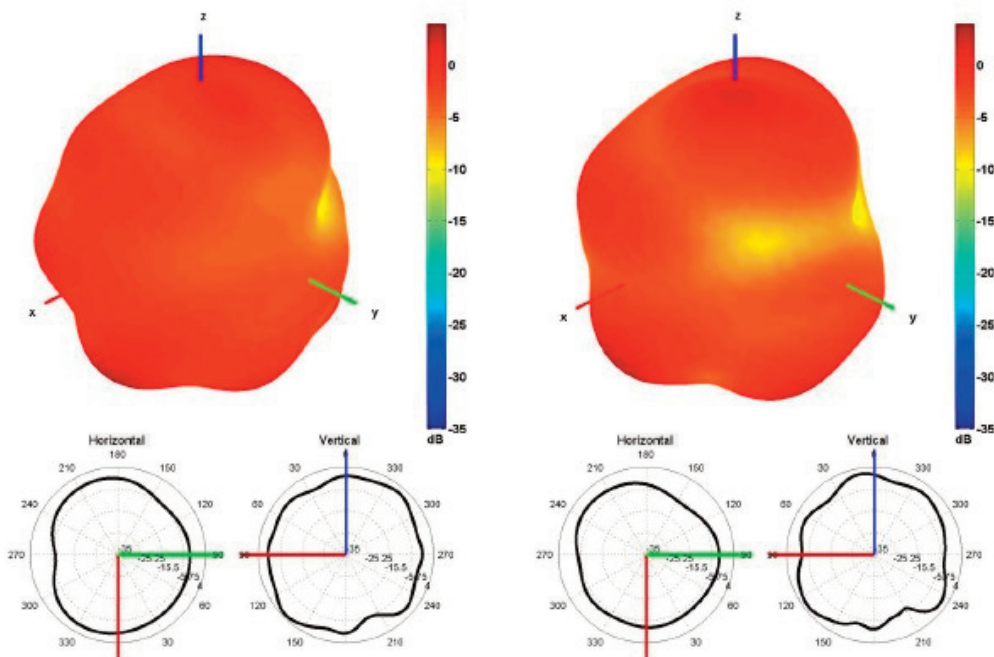
Antenna  
194845



## LTE wall mount antenna



940 and 1750 MHz Radiation pattern

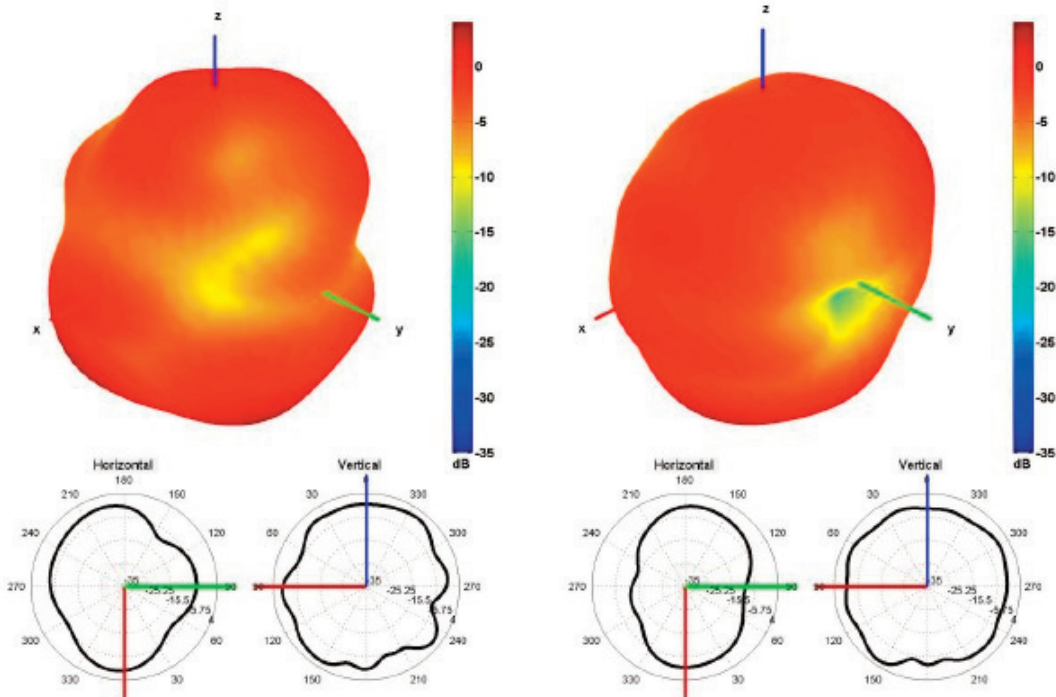


1850 and 1950 MHz Radiation pattern

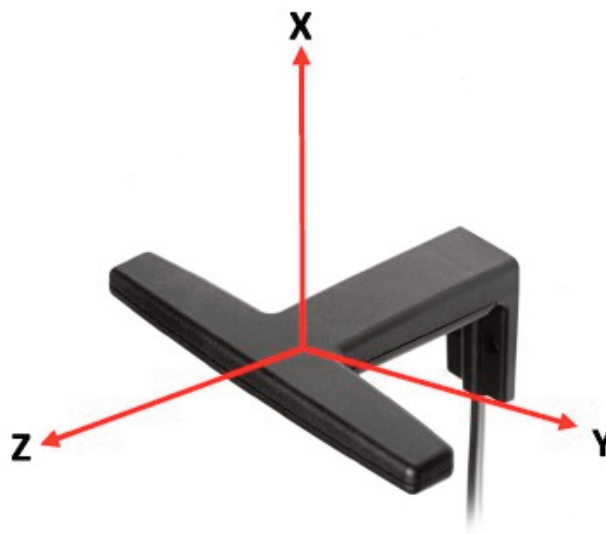
Antenna  
194845



## LTE wall mount antenna



2100 and 2600 MHz Radiation pattern



Radiation pattern reference